

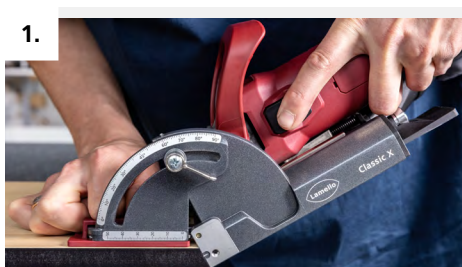


Tips tricks

Clamex S-20: the solution for detachable connections at different angles!

Would you like to benefit from the advantages of a Clamex and join furniture parts at different angles, but only use a classic biscuit joiner with a 4 mm cutter? No problem at all! The new Clamex S-20 makes all cuts possible with any biscuit joiner. Ideal for mitres from 22.5° to 180° and for joining thin materials from a material thickness of 8 mm.

How it works:



1. Cut 4 mm grooves into the edge.



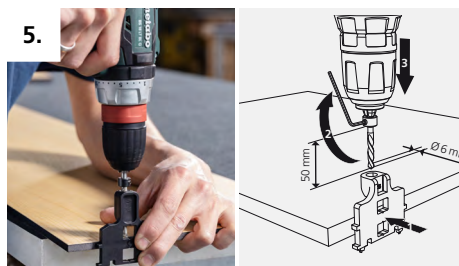
2. Carry over the position of the centre marking onto the first workpiece.



3. Hold the workpieces together and carry over the centre position.



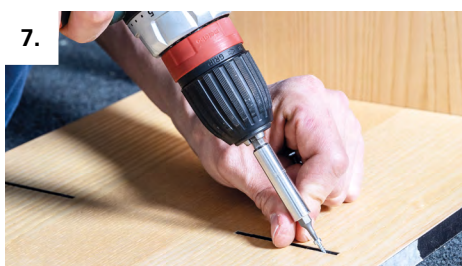
4. Align the machine and attach the stop square to the front edge for exact cutting.



5. Using the drill and alignment jig, drill a 6 mm access hole into the surface.



6. Attach the connector to the drill and alignment jig, slide it into the groove and align it with light hammer blows.



7. Fasten the connector halves with screws. For brittle materials, pre-drill 2 mm holes.



8. Assemble and align both components.



9. Tighten the Clamex S-20. Components can now be assembled and detached as often as required.